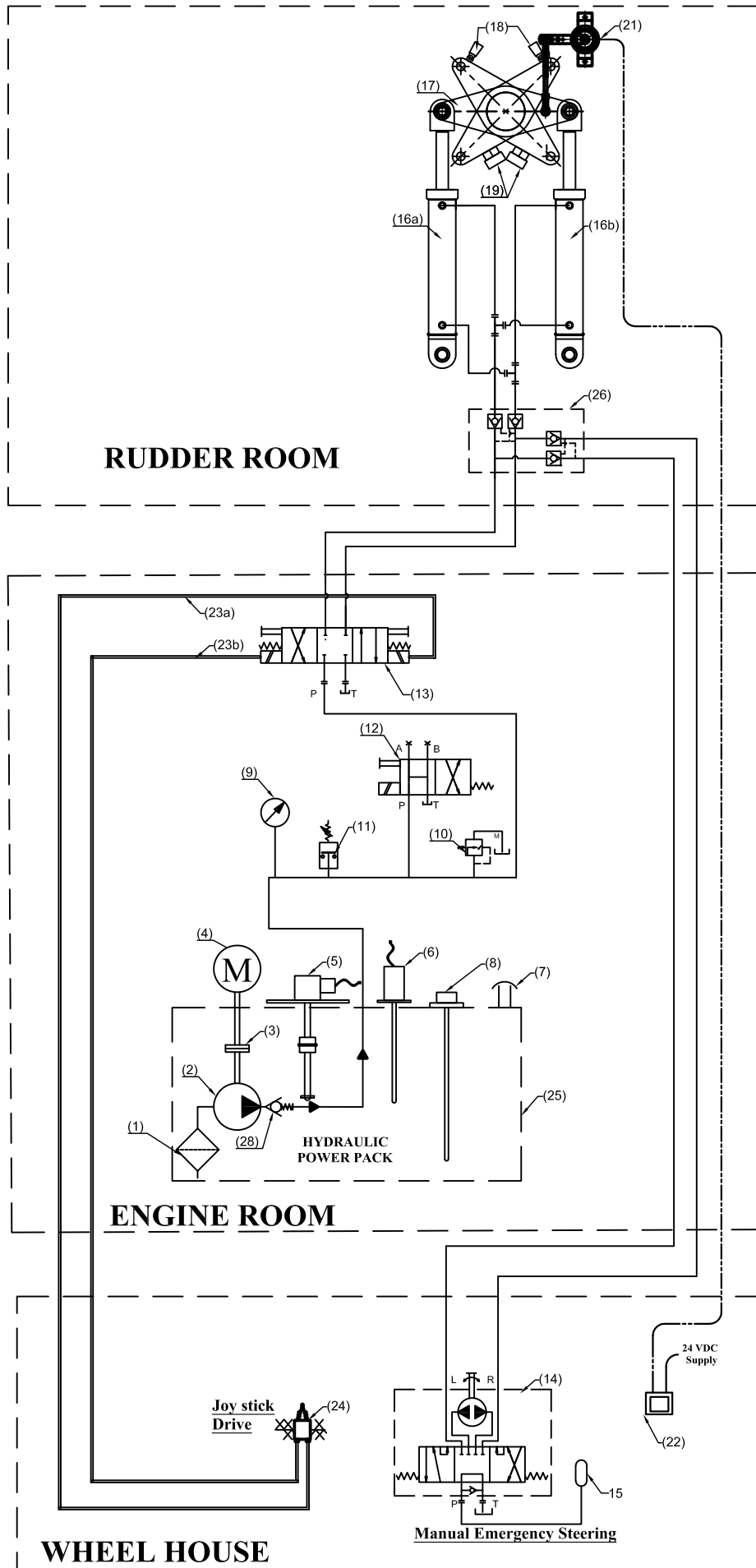


Electro-Hyd. Circuit - JumboZ-500E with Joystick Control-Emergency Steering



SI No.	Description
1	Suction Strainer
2	Hydraulic pump
3	Flexible Coupling
4	Electric Motor
5	Oil Level Sensor
6	Oil Temp. Sensor
7	Filler Breather
8	Oil Dip Stick
9	Pressure Gauge
10	Pr. Relief Valve
11	Pre. Switch. Low Pre. Alarm
12	Unloading Valve
13	Sol. Opertd. Dire. Control Valve
14	Emergency Steering
15	Flanged Reservoir
16a,16b	Hyd. Actuator - JumboZ 500
17	Tiller Arm
18	Limit Switch
19	Mechanical Stopper- (Yard Supply)
20	Oil Reservoir
21	Rudder Angle Sensor
22	Rudder Angle Indicator
23a,23b	Elec. Lines to Sol. Opertd. Valve
24	Joystick
25	Power pack Tank
26	Double Check Valve
27	Non-Return Valve



**MAC ♦ N ♦ HOM SYSTEMS
KOCHI - 20**

DESIGNATION

DWG. No.

DATE

Electro-Hydro. Circuit of JumboZ-500E
Motor -Joystick -Emergency

MHS-1828

24.03.2023

A

B

C

D

E

F

G

H